

# SHOREWAY ENVIRONMENTAL CENTER



The SBWMA Board of Directors approved a facility master plan that will pave the way for needed environmental enhancements at the Shoreway Recycling and Disposal Center (SRDC) in San Carlos.

The Shoreway enhancements will provide the recycling infrastructure needed to handle an expected increase of over 50,000 tons per year of recyclables and organics from the new recycling collection programs beginning in 2010/2011.

The new **Shoreway Environmental Center** will be a national model for sustainable building practices and innovative recycling and material handling operations.

Key features include:

- New state of the art Materials Recovery Facility (MRF) for sorting single stream recyclables from residents and businesses
- Expanded transfer station for more recycling and customer convenience
- “Green building” features such as solar panels and use of natural light
- New environmental education center and demonstration gardens

Groundbreaking: Fall 2008

Completion Date: Fall 2010

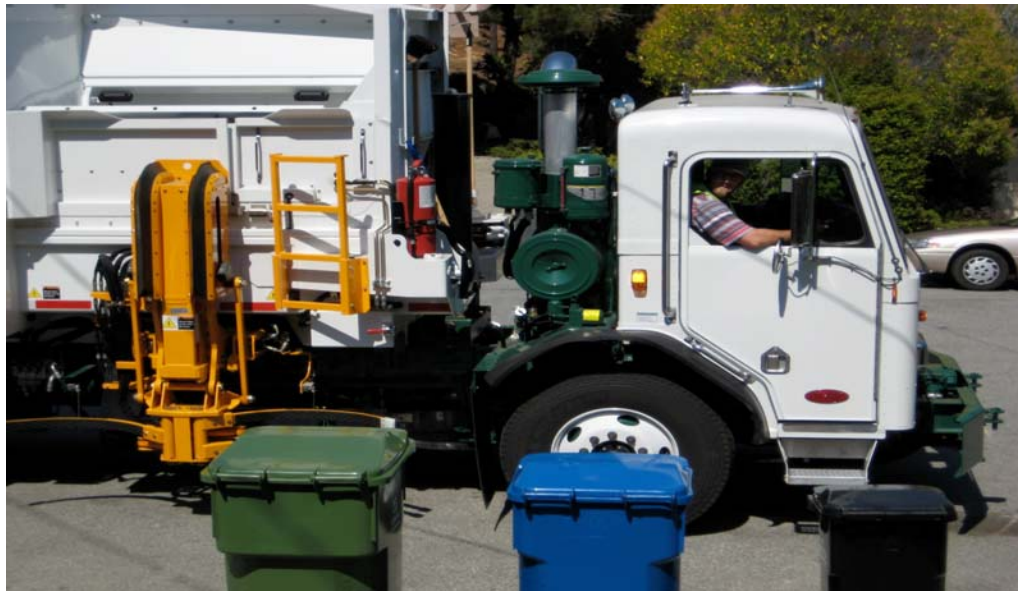
Estimated Cost: \$36.2 million for building and traffic improvements, and \$17.8 million for MRF processing equipment.



**RethinkWaste**  
South Bayside Waste Management Authority



### Rollout of Future Collection Services Utilizing Wheeled Carts for Residences



Pictured Left to Right: 96-gallon wheeled green cart for weekly organics collection. 64-gallon wheeled blue cart for weekly single stream (all paper and bottles/cans mixed together) collection. 32-gallon wheeled black cart for weekly garbage collection. Single person operated automated side-loader collection vehicle utilizing B-40 biodiesel will service most homes. Recyclables, organics and garbage will be processed at the upgraded Shoreway Recycling and Disposal Center.