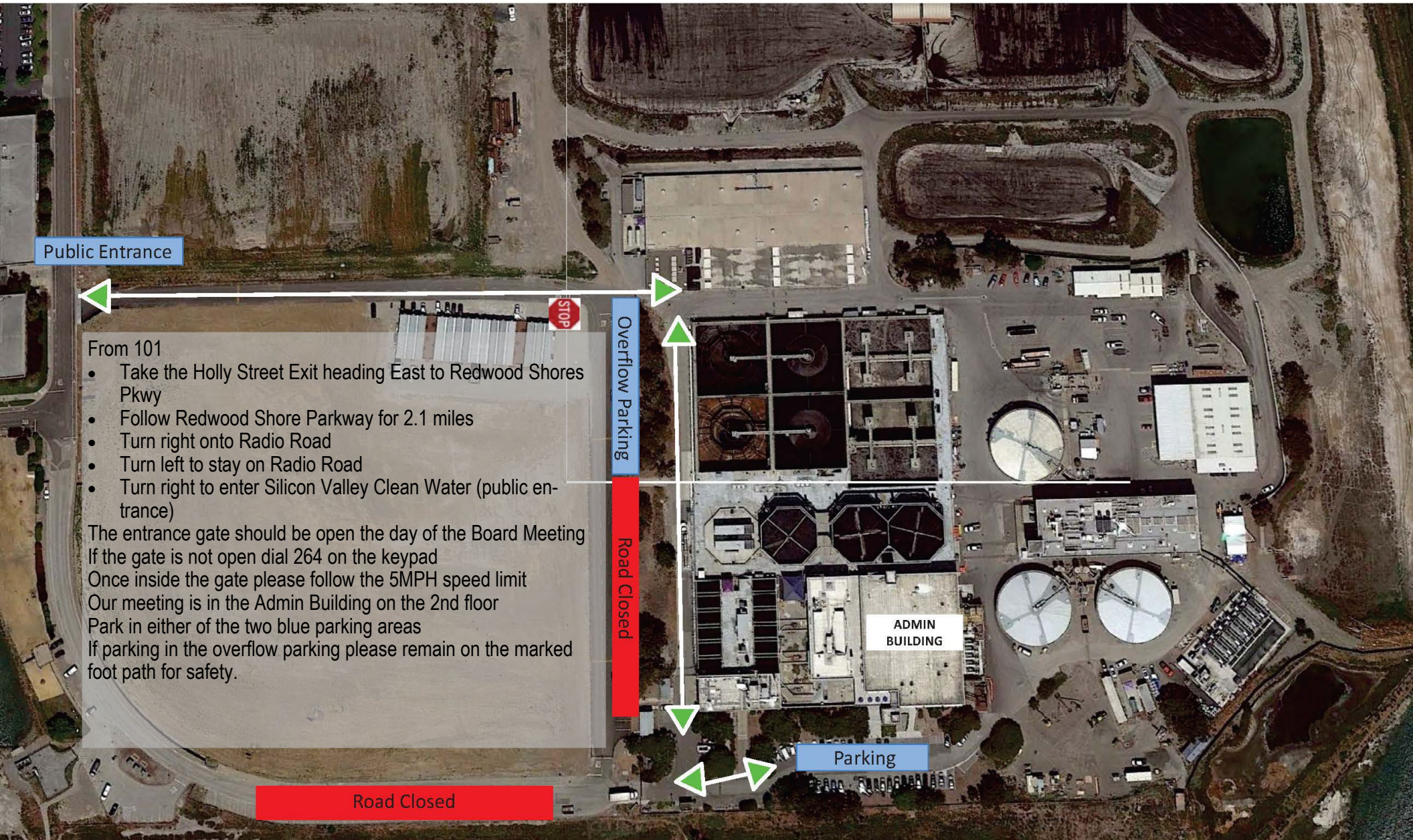


# Driving Directions to Silicon Valley Clean Water



Public Entrance

- From 101
- Take the Holly Street Exit heading East to Redwood Shores Pkwy
  - Follow Redwood Shore Parkway for 2.1 miles
  - Turn right onto Radio Road
  - Turn left to stay on Radio Road
  - Turn right to enter Silicon Valley Clean Water (public entrance)

The entrance gate should be open the day of the Board Meeting  
If the gate is not open dial 264 on the keypad  
Once inside the gate please follow the 5MPH speed limit  
Our meeting is in the Admin Building on the 2nd floor  
Park in either of the two blue parking areas  
If parking in the overflow parking please remain on the marked foot path for safety.

Overflow Parking

Road Closed

ADMIN BUILDING

Parking

Road Closed