

Figure 3.1



Components of the Shoreway Environmental Center

The Shoreway Environmental Center functions as an integrated recycling and waste management campus with separate buildings used as follows:

- Transfer Station:**
 The Transfer Station is used for the unloading and transfer of garbage, construction and demolition (C&D) debris, and organics from public and private vehicles.
- Materials Recovery Facility (MRF):**
 The MRF is used for the unloading and processing of recyclables from homes and businesses; and the shipment of commodities to domestic and export markets.
- Public Recycling Center:**
 The Public Recycling Center at the front of the complex offers the buyback of recyclables, and free drop off of a wide variety of materials such as electronic waste (TVs, computers, etc.) and some household hazardous waste (batteries, paints, waste oil, etc.) items.
- Environmental Education Center and tours Program:**
 RethinkWaste offers free tours to schools and the general public of the Shoreway Environmental Center. Visitors learn about resource conservation, the 4Rs and what happens to materials once they are picked up from homes and businesses.
- Recology San Mateo County Offices:**
 Recology has its administrative offices located at 225 Shoreway Road, San Carlos and is open to the public for bill payments and customer questions. Recology's operations yard is also located at Shoreway.
- South Bay Recycling (SBR) Offices:**
 SBR, which operates the Shoreway Environmental Center on behalf of RethinkWaste, has its administrative offices housed in the MRF building. SBR's operations yard is also located at Shoreway.

Aerial Photo of Shoreway with Recology's Operational Area



Figure 4.2: Mixed Waste Processing System Designed for Shoreway Transfer Station

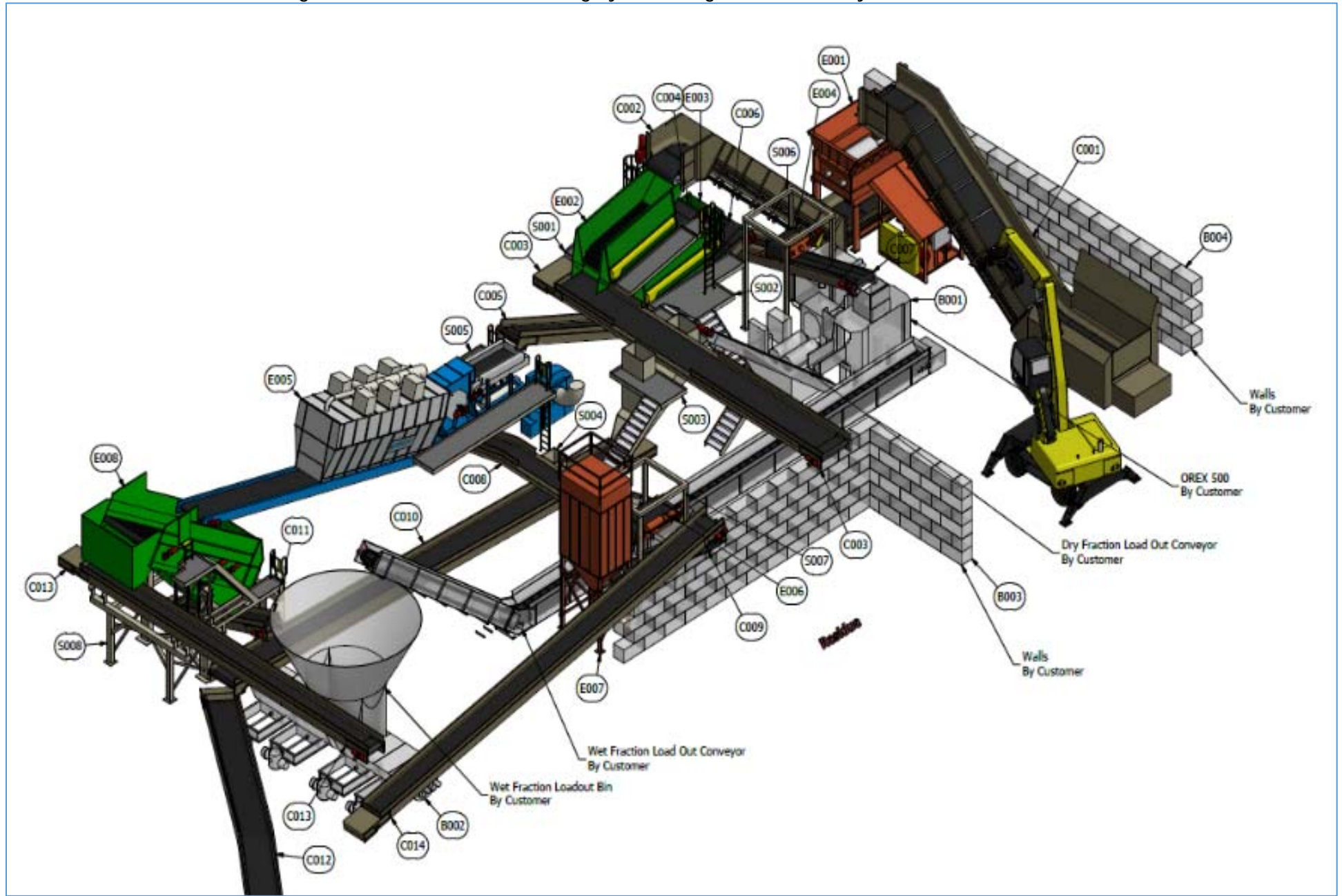


Figure 4.3: Proposed Transfer Station Building Expansion Options

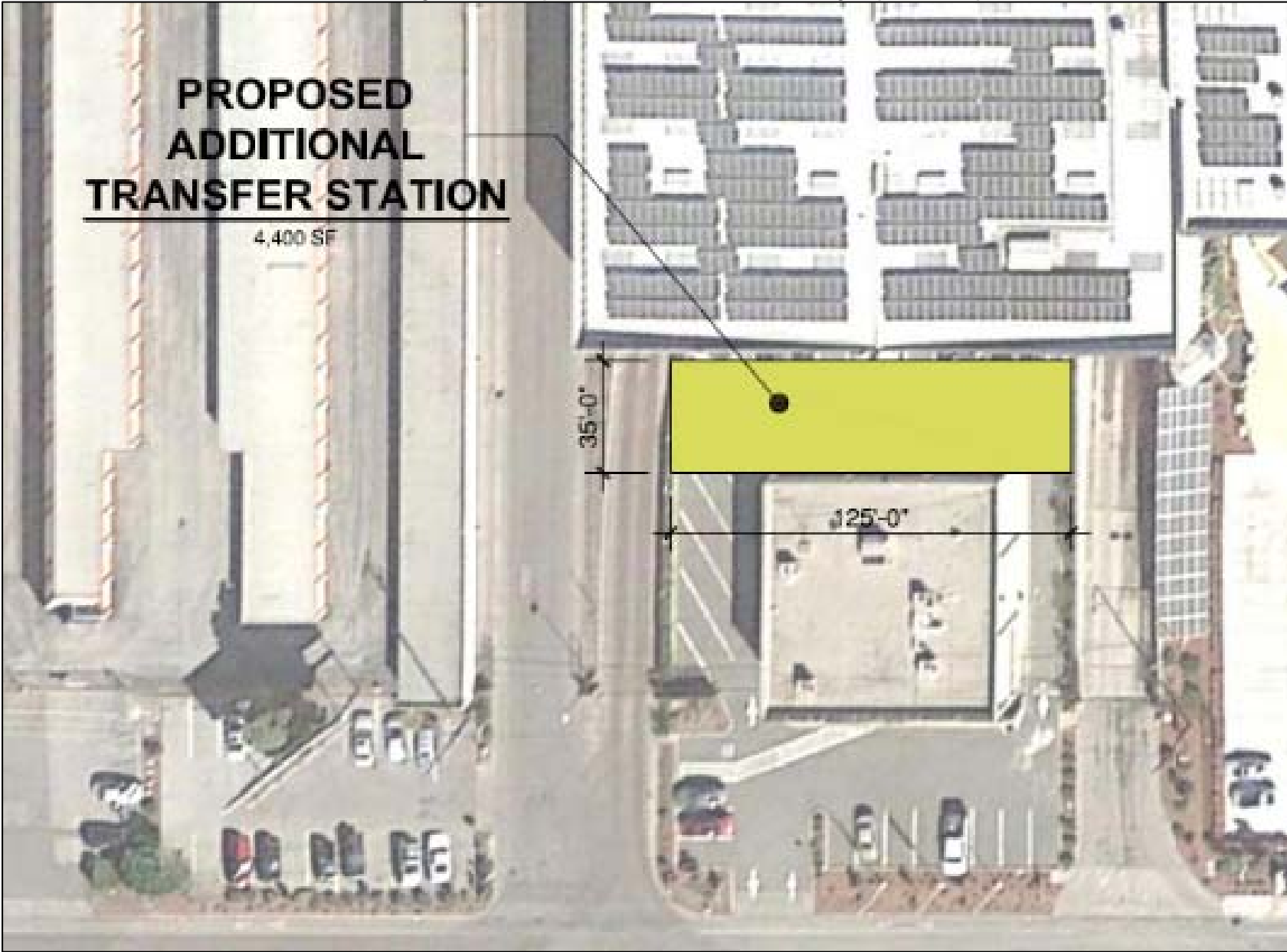


Figure 4.3 Continued: Proposed Transfer Station Building Expansion Options

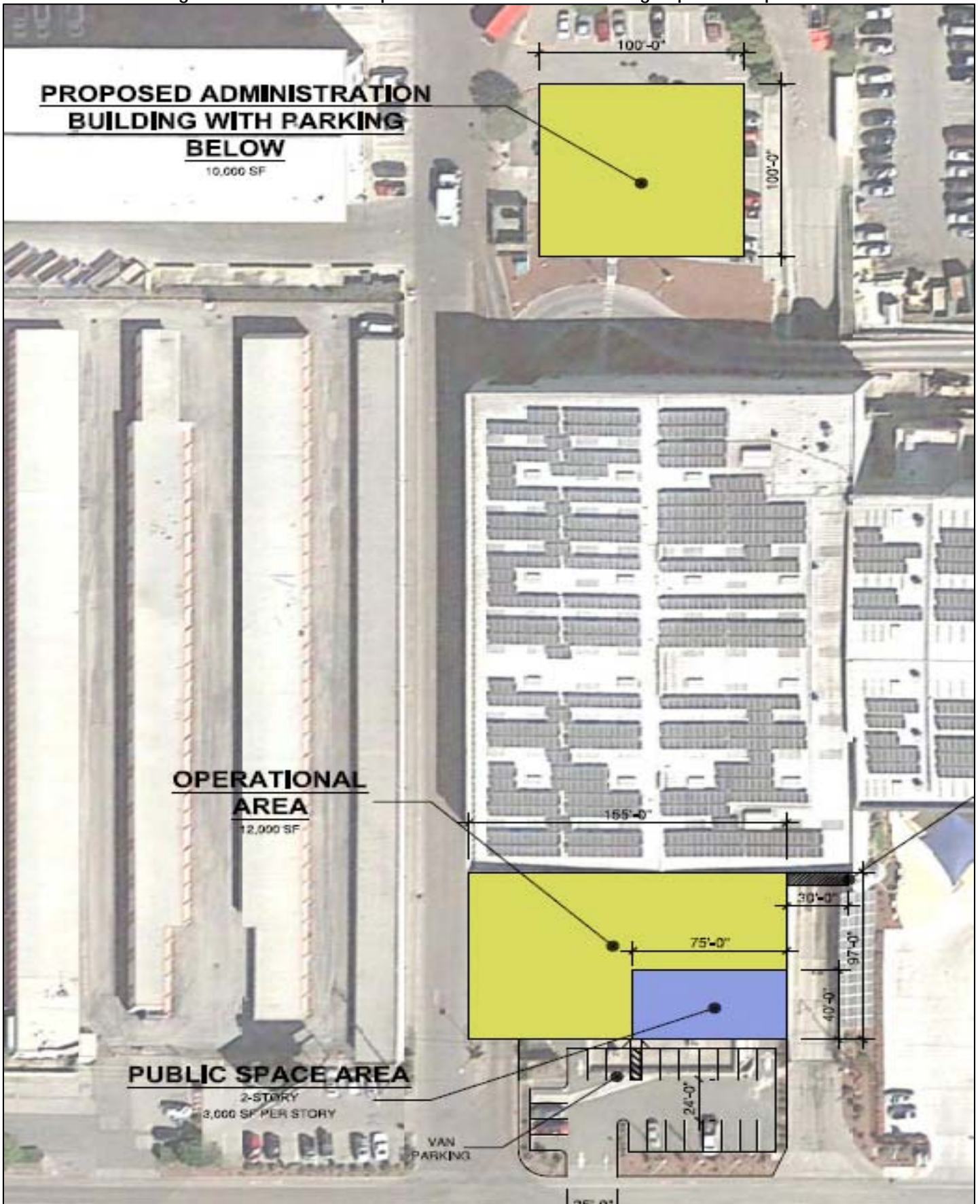


Table 4.30: Option 1 – Remodel of Recology Administration Building for SBWMA Offices



Table 4.31: Option 2 – Construction of New Stand Alone SBWMA Office and Public Meeting Space

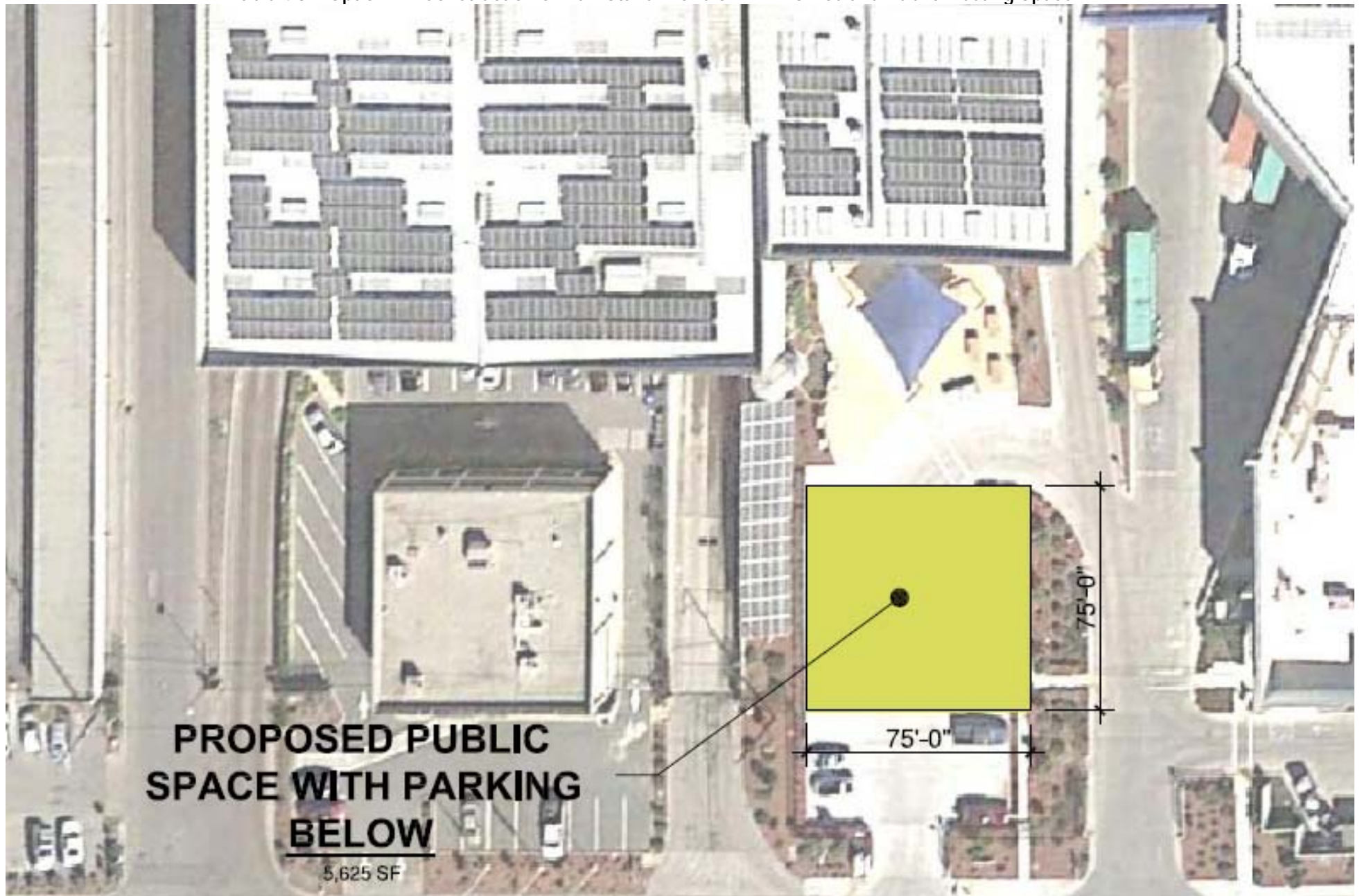


Table 4.32: Option 3 - Construction of New SBWMA Office and Public Meeting Space (Shown in Blue) within Transfer Station Expansion

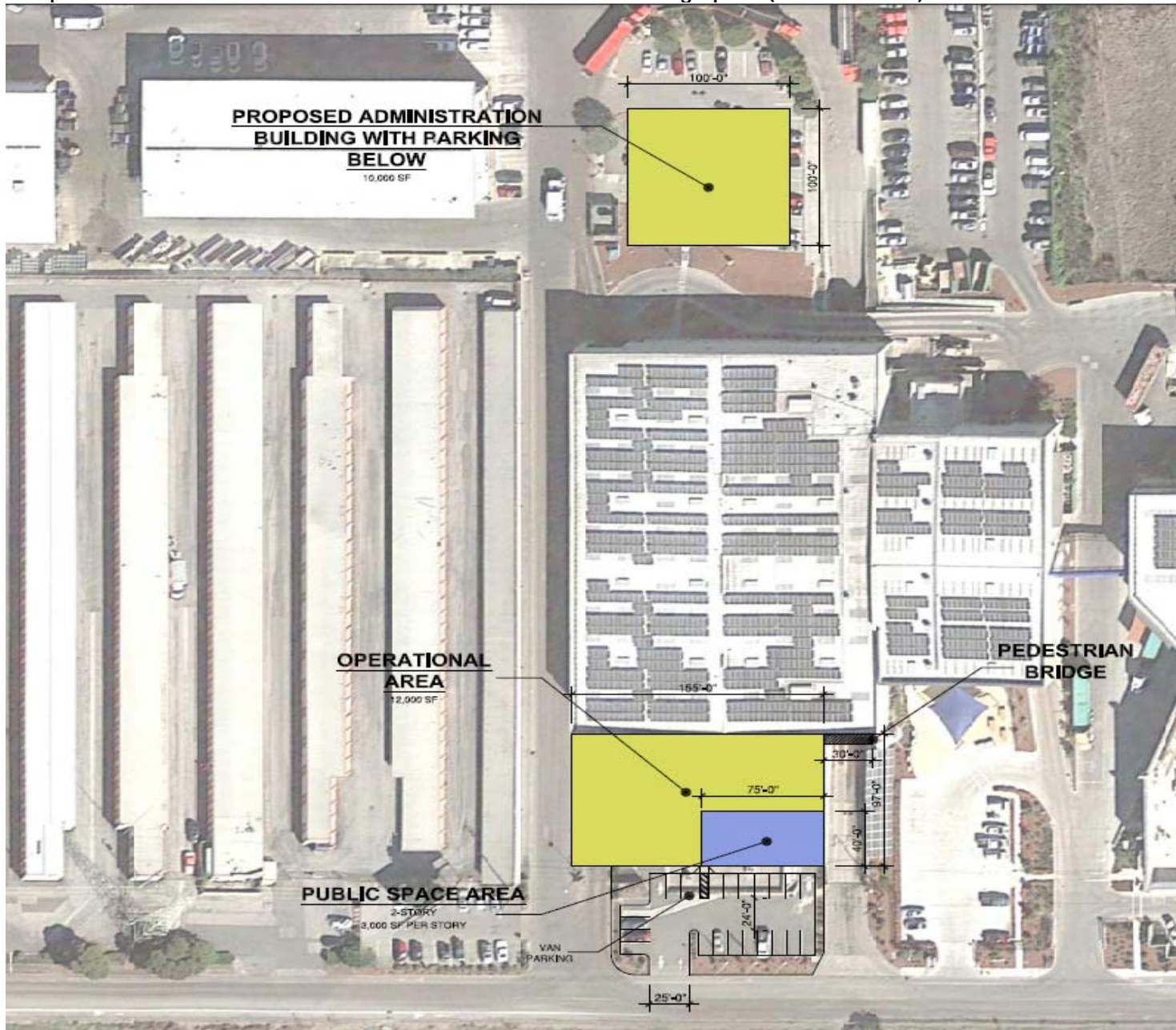


Figure 4.4: Rendering of Shoreway MRF Tipping Area Extension and Site Plan with Construction Location Shown

